

## Anti-GLP1R hlgG1 Antibody(mAb-36986)

### Product information

GM-51168AB-10	10 µg
GM-51168AB-100	100 µg
GM-51168AB-1000	1 mg

### Antibody Information

Species Reactivity	Human
Clone	mAb-36986
Source/Isotype	Monoclonal Human IgG1 /k
Application	Flow cytometry; Block assay
Specificity	Detects GLP1R
Gene	GLP1R
Other Names	GLP-1; GLP-1R; GLP-1-R
Gene ID	2740
Background	This gene encodes a 7-transmembrane protein that functions as a receptor for glucagon-like peptide 1 (GLP-1) hormone, which stimulates glucose-induced insulin secretion. This receptor, which functions at the cell surface, becomes internalized in response to GLP-1 and GLP-1 analogs, and it plays an important role in the signaling cascades leading to insulin secretion. It also displays neuroprotective effects in animal models. Polymorphisms in this gene are associated with diabetes. The protein is an important drug target for the treatment of type 2 diabetes and stroke. Alternative splicing of this gene results in multiple transcript variants.
Storage	Store at 2-8°C short term (1-2 weeks). Store at ≤ -20°C long term. Avoid repeated freeze-thaw.
Formulation	Phosphate-buffered solution, pH 7.2.
Endotoxin	< 1 EU/mg, determined by LAL gel clotting assay

## Data Examples

Flow cytometry

H\_GLP1R Reporter HEK-293 Cell Line (Catalog # GM-C25537) was stained with Anti-GLP1R hlgG1 Antibody(mAb-36986) (Catalog # GM-51168AB) or isotype control antibody, followed by anti-Human IgG APC-conjugated Secondary Antibody.

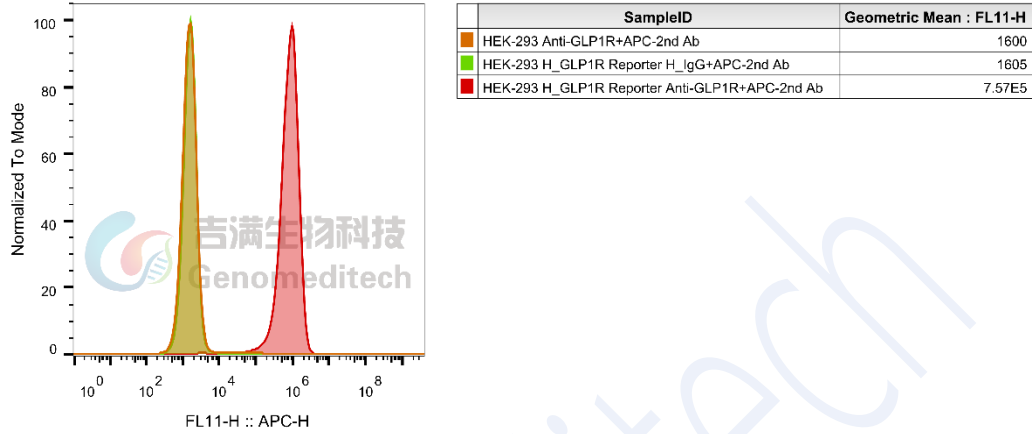


Fig 1. FACS

Block assay

Anti-GLP1R hlgG1 Antibody(mAb-36986) (Catalog # GM-51168AB) inhibits H\_GLP1R Reporter HEK-293 Cell Line (Catalog # GM-C25537) Luminescence induced by GLP-1(7-37). IC50 for this effect is 0.3864  $\mu\text{g}/\text{mL}$ .

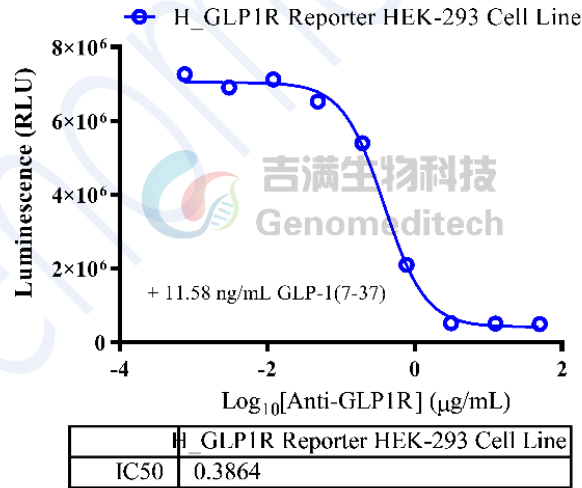


Fig 2 Assay